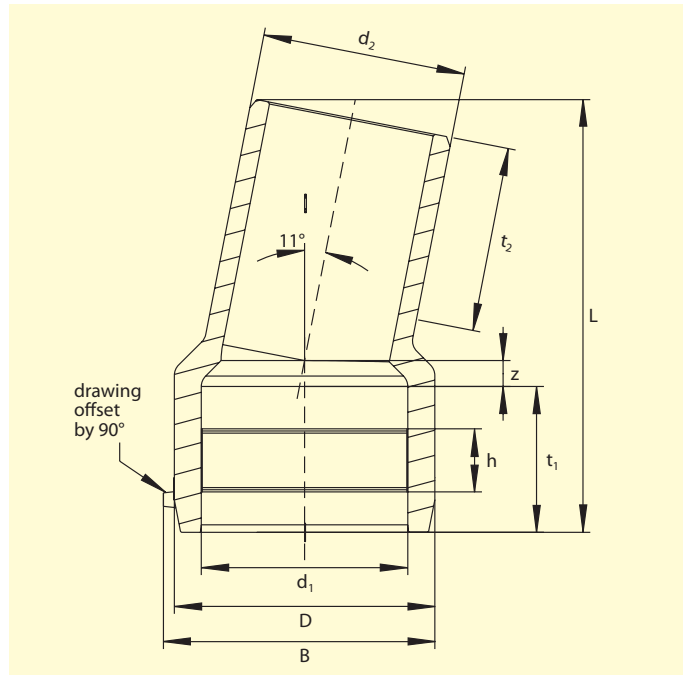


## FRIALEN® I/A Elbows 11° WS11°



### PE 100 SDR 11

Maximum working pressure 16 bar (water)/10 bar (gas)



d	Order Ref.	Stock-status	BX	PU	D	L	t1	t2	z	h	B	Weight kg/each
110	<b>616139</b>	1	8	144	141	235	79	82	14	32	151	0,920
125	<b>616140</b>	1	5	90	160	250	84	87	15	34	168	1,250
160	<b>616141</b>	1	8	64	200	295	93	98	20	50	206	2,260
180	<b>616142</b>	1	4	32	226	310	100	105	22	50	230	3,050
225	<b>616143</b>	1	1	18	280	350	114	120	24	50	284	5,280

FRIALEN-Safety Fittings can be fused to pipes of SDR stages 11 to 17.6. Minimum wall thickness  $s_{min} \geq 3$  mm. Other SDR-stages on request. Please observe the marking directly at the product, which is mandatory. DVGW Registration No.: DV-8606AU2249.

## FRIALEN® I/A Elbows 11° WS11°

### Areas of Application

The FRIALEN Elbow WS 11° is designed for universal direction changes in HDPE pipes even in restricted spaces. Multiple applications allow 22°, 33° etc ... elbows to be reached.

### Assembly Instructions

Fusing the pipe ends to the FRIALEN Elbow WS 11° takes place by the FRIALEN fusion technique – leak-proof and longitudinal strong. One of the pipe ends is inserted in the coupler side of the FRIALEN Elbow WS 11° and then fused, the other pipe end is connected and fused to a FRIALEN Coupler. The pipe ends are prepared (remove oxidic layer and clean) according to the general installation instructions (see also „Assembly Instructions“ for „FRIALEN Safety Fittings for house connections and distribution pipes up to d 225“).

### Eleven good reasons for using the FRIALEN Elbow WS 11°:

- **Universal direction changes due to multiple applications 11°/22°/33° or 45° + 11° ...**
- **Maximum flexibility in case of obstructions and in restricted spaces due to coupler/spigot design**
- **Long insertion depth of coupler for optimum pipe guidance (no holding device required)**
- **Extra wide fusion zone inside coupler**
- **Maximum stability due to large wall thickness**
- **Cold zones at the front and in the centre of the coupler**
- **Exposed heating coil for direct heat transfer to pipe**
- **Small annular gap resulting in optimum joining pressure in the fusion zone**
- **Contacts safe to touch**
- **Fusion indicator for visual supervision of fusion process**
- **Additional barcode for tracing back the underground fitting (Traceability-Coding)**

**For further information, please call our customer service staff and specialist advisers.**

FRIATEC Aktiengesellschaft · Technical Plastics Division  
 P.O.B. 71 02 61 · D-68222 Mannheim  
 Telephone +49 621 486-1431 · Telefax +49 621 479196  
 www.friatec.com · E-Mail: info-frialen@friatec.de

Please find our datasheets for downloading on the internet at [www.friatec.com](http://www.friatec.com)



an OAliaxis company