

**IMPROVED  
RANGE**

# **DURAFUSE** **DUCK FOOT BENDS**

Simple, easy and cost effective hydrant solutions

*GPS Duck Foot Bends offer improved installation quality, joint security and total reliability in one complete kit.*

*Combined with reduced installation time – GPS Duck Foot Bends provide an unbeatable easy, cost effective hydrant solution.*

*Now with full faced stub flange to eliminate locked hydrant turn.*



*Base design enhances hydraulic efficiency*



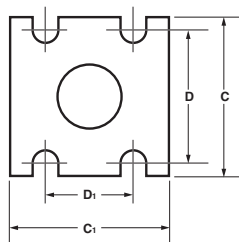
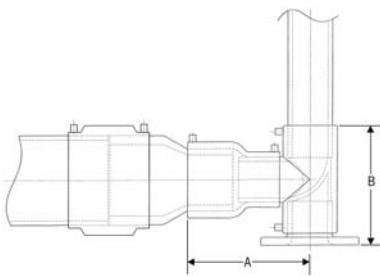
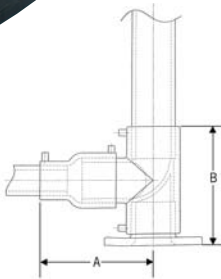
## Features & Specifications:

- Eliminates the need for mechanical joints.
- Provided as a full kit for ease of ordering (base & DuraFuse equal tee, full faced stub flange assembly and reducer).
- Common base - fully tested to 16 bar water industry specifications.
- Fully welded PE hydrant full faced flange assembly to eliminate valve twisting when locked.
- Available in sizes 63mm, 90mm, 125mm and 180mm.
- Reduces installation time and saves labour cost.
- Fully fused system improves installation quality, joint security integrity and eliminates potential seal leakage.
- Reduces whole life cost.
- 50 year design life.
- No metal parts increase design life due to elimination of corrosion.
- Papped stub flange can easily be cut to suit trench depth.
- Base design enhances hydraulic efficiency.

## Dimensions and Product Codes:

Size mm	A mm	B mm	C x C <sub>1</sub> mm	D x D <sub>1</sub> mm	Weight kg	SDR11 code
63 x 80	230	270	200 x 230	160 x 180	4.07	XX 384 459
90 x 80	200	270	200 x 230	160 x 180	3.98	XX 384 313
125 x 80	250	270	200 x 230	160 x 180	4.74	XX 384 484
180 x 80	490	270	200 x 230	160 x 180	8.12	XX 384 487

Size mm	A mm	B mm	C x C <sub>1</sub> mm	D x D <sub>1</sub> mm	Weight kg	SDR11 code
90 x 100	234	239	307 x 208	245 x 160	10.8	XX 384 483
110 x 100	224	239	307 x 208	245 x 160	11.2	XX 384 314
125 x 100	236	239	307 x 208	245 x 160	11.1	XX 384 493
180 x 100	502	239	307 x 208	245 x 160	14.4	XX 384 496



### PE Types

PE Colour	PE100 (Excel)
Black	40
Blue	41

Replace XX with range code of material/colour required.

Other sizes made to order upon request subject to minimum order values/quantities. Available in kit form only.

Kit comprises of:-

- 1 x Base
- 1 x Electrofusion Tee
- 1 x Papped Full Faced Stub Flange assembly (0.5m pup approx.)
- 1 x Reducer/expander to suit input size

**Bolts NOT included**

GPS reserve the right to modify its products without prior notice and as a result product supplied may differ slightly from that shown/described above.

For further information on all GPS products and services contact our sales department as detailed below.

**GPS**  
**PE PIPE SYSTEMS**

email: [enquiries@gpsuk.com](mailto:enquiries@gpsuk.com)  
web: [www.gpsuk.com](http://www.gpsuk.com)

#### UK Enquiries

St Peter's Road  
Huntingdon  
Cambridgeshire  
PE29 7DA  
Tel: +44 (0)1480 52121  
Fax: +44 (0)1480 458829

#### Export Enquiries

Walsall Road  
Cannock  
Staffordshire  
WS11 9NS  
Tel: +44 (0)1543 279909  
Fax: +44 (0)1543 279450

Distributor

G0010/1 October 2005